

PIONEER[®] MDR

Moving Die Rheometer

▶ A rheometer designed for simplicity and value, effective in production batch control, cure setting and compound development



▶ The PIONEER[®] MDR is a moving die rheometer designed for simplicity and value providing cure testing for general rubber applications. It's smaller footprint means more effective use of bench space, while it's LCD touch screen and user interface provide convenient stand-alone operation with data output to a PCL3-compatible USB printer or flash drive.



ALPHATECHNOLOGIES

PIONEER® MDR

Moving Die Rheometer

alpha-technologies.com

Testing Features



- Cost effective cure testing for general rubber applications
- Sealed biconical dies
- Does not require a PC or printer to run tests
- Versatile LCD Touch screen and User Interface
- Simple sample loading and unloading due to open design
- Smaller instrument footprint for effective use of bench space

Performance



- The MDR rotor-less design provides faster temperature recovery than ODR's reducing test time
- Excellent repeatability
- Measure cure under nearly true isothermal conditions
- Excellent test sensitivity to mixing errors
- Limited operator influence
- Suitable for quality control

Options



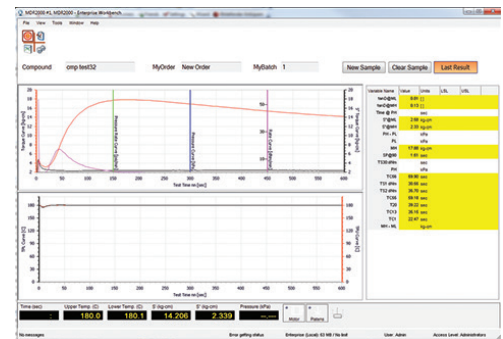
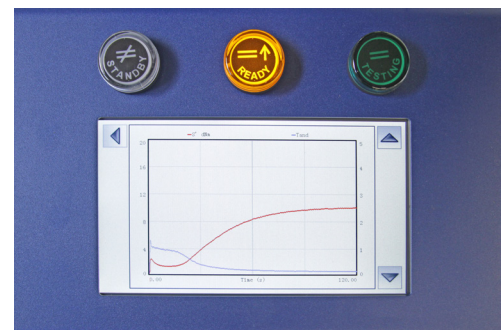
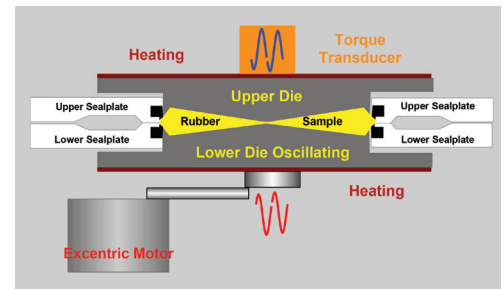
- Pressure measurement option available for the testing of sponge compounds
- Cure and pressure curves can be collected simultaneously
- PIONEER® Software for handling historical data - provides user definable datapoints for time, temperature and torque @ time
- Sample cutter Model 2000R for rubber
- Film to protect dies and seals from contamination and wear

Specifications



FREQUENCY: 100 cpm (1.67 Hz)
TEMPERATURE RANGE: RT to 200°C
STRAIN: 0.5 Standard (7%); 0.2, 1.0 or 3.0 degrees available (2.8%, 14% or 42%)
STANDARD DATAPPOINTS: ML, MH, MH-ML, Ts1, Ts2, T10, T50, T90, S* at MH, TD at ML, TD at MH
Max Cure Rate, Time at Max Cure Rate
LCD Touch Screen: 155mm x 85mm, Resolution 800 x 480
TESTING STANDARDS: Meets ASTM D5289 and ISO6502

LANGUAGES: English, Italian, Spanish, Portuguese, Turkish, Polish, Romanian, Czech, French, Hungarian and Russian
ELECTRICAL: 110-120VAC/60Hz (10amp) Single phase
220-240VAC/50Hz (5amp) Single phase
AIR PRESSURE: 60 psi (413Kpa, 4.2 kg/cm²) minimum
DIMENSIONS: 20"W x 20"D x 47"H (508mmW x 507mmD X 1194mmH)
WEIGHT: 260 lb (118kg) approx



ALPHATECHNOLOGIES
alpha-technologies.com

Akron, OH - USA
+1 330 745 1641

Heilbronn, Germany
+49 7131 297 170

Tokyo, Japan
+81 3 3834 3451

Shanghai, China
+86 21 33773538

Mumbai, India
+91 22 288054575